

www.suvidhapebs.com



SUVIDHA PEBS

Our strategy is to provide the most comprehensive and thorough solutions by constantly developing and improving the 'tools' our customers need for their businesses to flourish.

SUVIDHA PEBs is a pioneer in supplying various steel products used in Pre-Engineered Building industry. SUVIDHA is well known name for providing the most comprehensive and thorough solutions by constantly developing and improving its Products and Services. Our products are made out of best steel which is procured from high quality steel manufacturers across the country and overseas to ensure to deliver quality products.

Producing capacity of varies tons per month with a set of fully & semi-automated machine system. SUVIDHA ensures that its products or services satisfy the customer's quality requirements and achieve continual improvement of its performance.



SUVIDHA PEBs [Pre-Engineered Building System] is one of the leading companies in designing, manufacturing, supplying and installation of pre-engineered steel buildings and building components for industries, warehouses, commercial centers, multi-storied buildings, aircraft hangers, indoor stadium, solar roofing panels, cold form steel structures, conventional hall, rooftop works and many others.

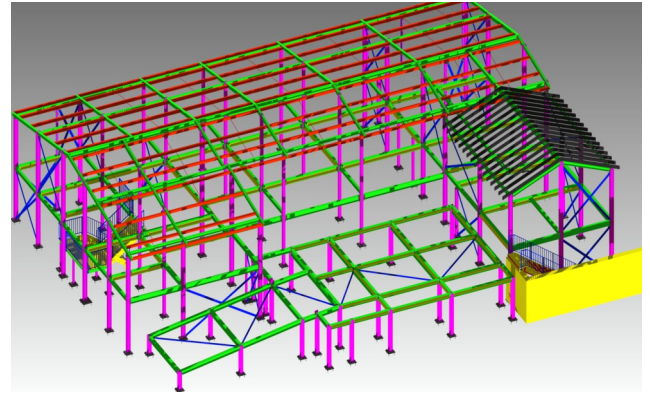
SUVIDHA PEBs is a one-stop trust worthy solution for all building requirements of varied customers. Our pre-engineered steel buildings are uniquely designed and fabricated to suit your requirements. Built strictly following the international standards, these buildings consist of different components, meticulously designed to be compatible to each other.



We specialized in pre-engineered building systems design, fabrication and erection. The components fabrication is carried out in our factory under strict quality control as per detailed production drawing. These components are transported to end user's site with proper markings and assembled at the project site as per erection drawings.

SUVIDHA PEBs has an in-house design, technical engineering and fabrication team. Some of the latest software used by our design and engineering team. Our well trained design and engineered team is capable to design complex steel building structure as per client requirement.

The talented group of designers and engineers that makes up our in-house department work within a culture that fosters idea generation and perfection to the fullest. The end result is a consistent flow of design, process and product innovations, bolster the SUVIDHA PEBs.



With SUVIDHA, you have a perfect partner who takes care of your requirements with utmost professionalism and with a scientific approach.

Faster Completion: With advanced technology and skilled experience on our side, the work gets done faster.

Value & Maintenance Free: Structures built with low initial costs and maintenance free fineness.

Aesthetic Appeal: Innovative designs that draw attention.

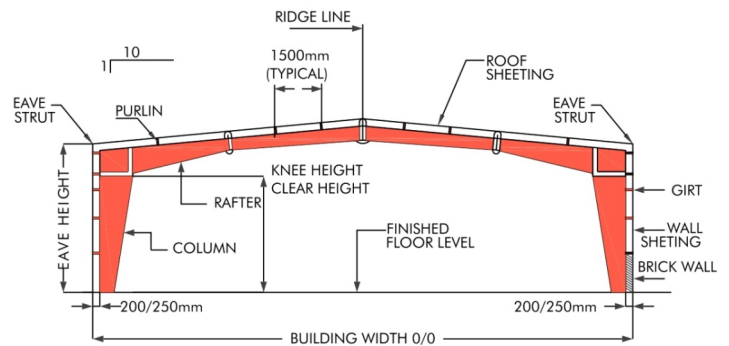
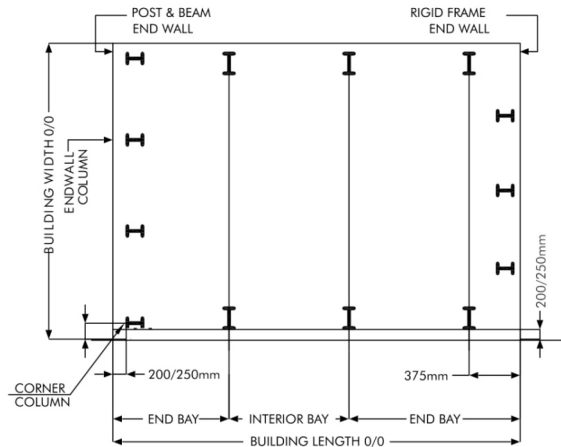
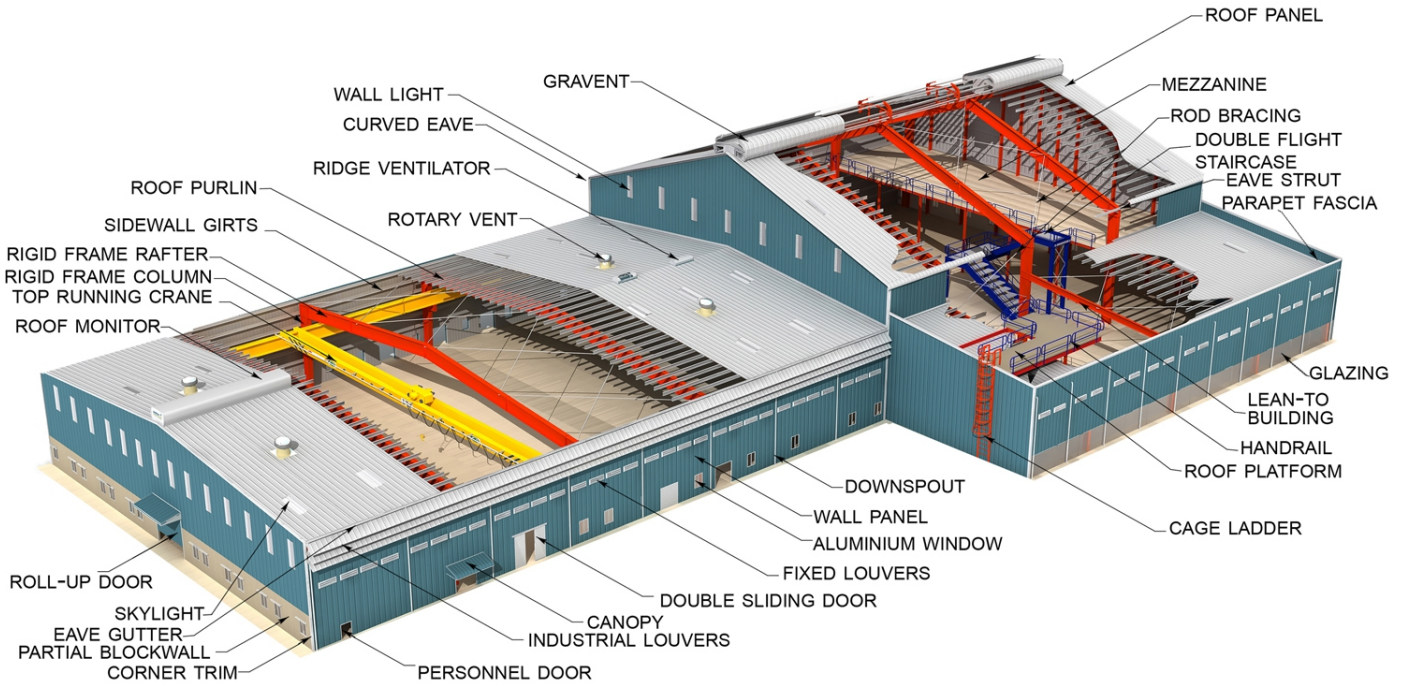
Strength & Durability: Strong structures that is weather and earthquake resistant.

Flexible: Easy to expand, setup and change existing design.

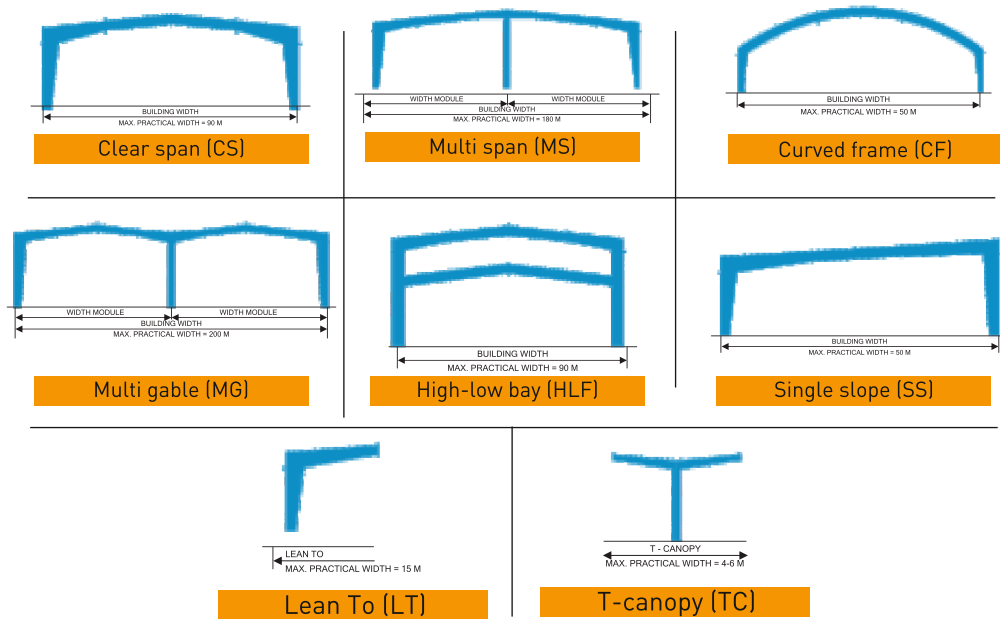
Versatility: Nationwide network of trained certified builders equipped to handle complex, turnkey & large jobs.

Environmental Responsibility: The materials can be recycled.

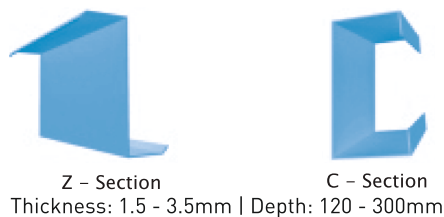
Typical PRE-ENGINEERED BUILDING



Primary Members: Primary members are the main load carrying and support members of a pre-engineered building. The main frame members include anchor bolts, base plate, columns, rafters and other supporting members. The shape and size of these members vary based on the application and requirements. The frame is erected by bolting the end plates of connecting sections together. All the steel sections and welded plate members are designed in accordance with the applicable sections as per the latest international codes and standards such as AISC, AISI, MBMA and IS to meet all the customer specifications.



Secondary Members: Secondary structural framing refers to purlins, girts, eave struts, wind bracing, flange bracing, base angles, clips and other miscellaneous structural parts. Purlins, girts and eave struts are cold formed steel members which have a minimum yield strength of 345 MPa (50,000 psi) and will conform to the physical specifications of ASTM 572 (Grade 50) or ASTM A653 (Grade 50) or equivalent.



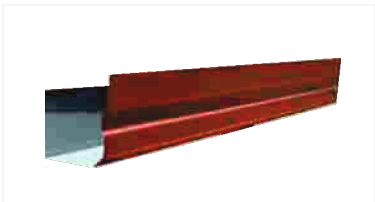
ACCESSORIES

SUVIDHA PEBs can be designed with your choice of a variety of attractive and architecturally sound accessory options. Windows, doors, natural lighting and ventilation, accessories are available to fit almost any of your requirements.

Ridges



Eave Gutter



Flashings



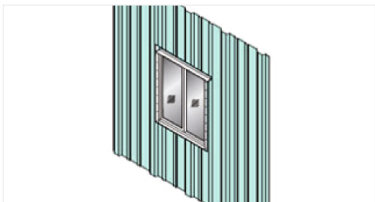
Down Spouts



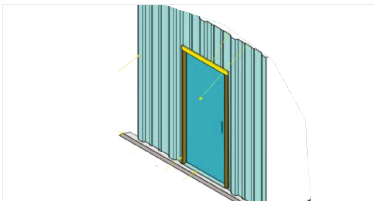
Day Light Panels



Windows



Doors



Turbo Roof Ventilators



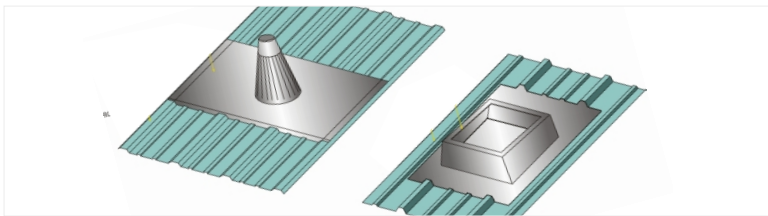
Cantilevered Canopies



Fasteners



Roof Jacks & Curbs



SUVIDHA PEBs is one of the companies to effectively implement and practice OTD (On Time Delivery). Our in-house SPEED module, built on OTD, has been a sound contributor in streamlining the entire manufacturing process and maximizing overall efficiency. This system helps us deliver high quality products, on time, every time!

OTD ensures;

- 🕒 A seamless integration of processes, from Request For Quotation (RFQ) to Project Handover.
- 🕒 Sequential supply system for the various blocks comprising the overall building.
- 🕒 Daily project updates for the customer.
- 🕒 Absolute transparency in working for all stakeholders.
- 🕒 Reduced reaction time to provide faster and accurate project completion.



Value, strength and flexibility are evident in every SUVIDHA Pre-Engineered Building. When you choose SUVIDHA PEBs, you can be certain that your project will benefit from the dedicated efforts of our in-house team. With SUVIDHA PEBs, you have a perfect partner who takes care of your requirements with utmost professionalism and with a scientific approach.



CONTACT US

SUVIDHA PEBs

No. 175B, 3rd Cross, Anjanappa Building,
V P Road, Opp. Govt. High School,
Jalahalli, Bengaluru - 560013.

Mob: +91 8892110730

E-mail: suvidhapebs@gmail.com

www.suvidhapebs.com